

Room Setups for UC BALLROOM A, B, and C

*Please note that adding additional furniture to the room will decrease the listed capacities.

Diagram shows
BALLROOM A,
BALLROOM B, AND
BALLROOM C
as separate rooms

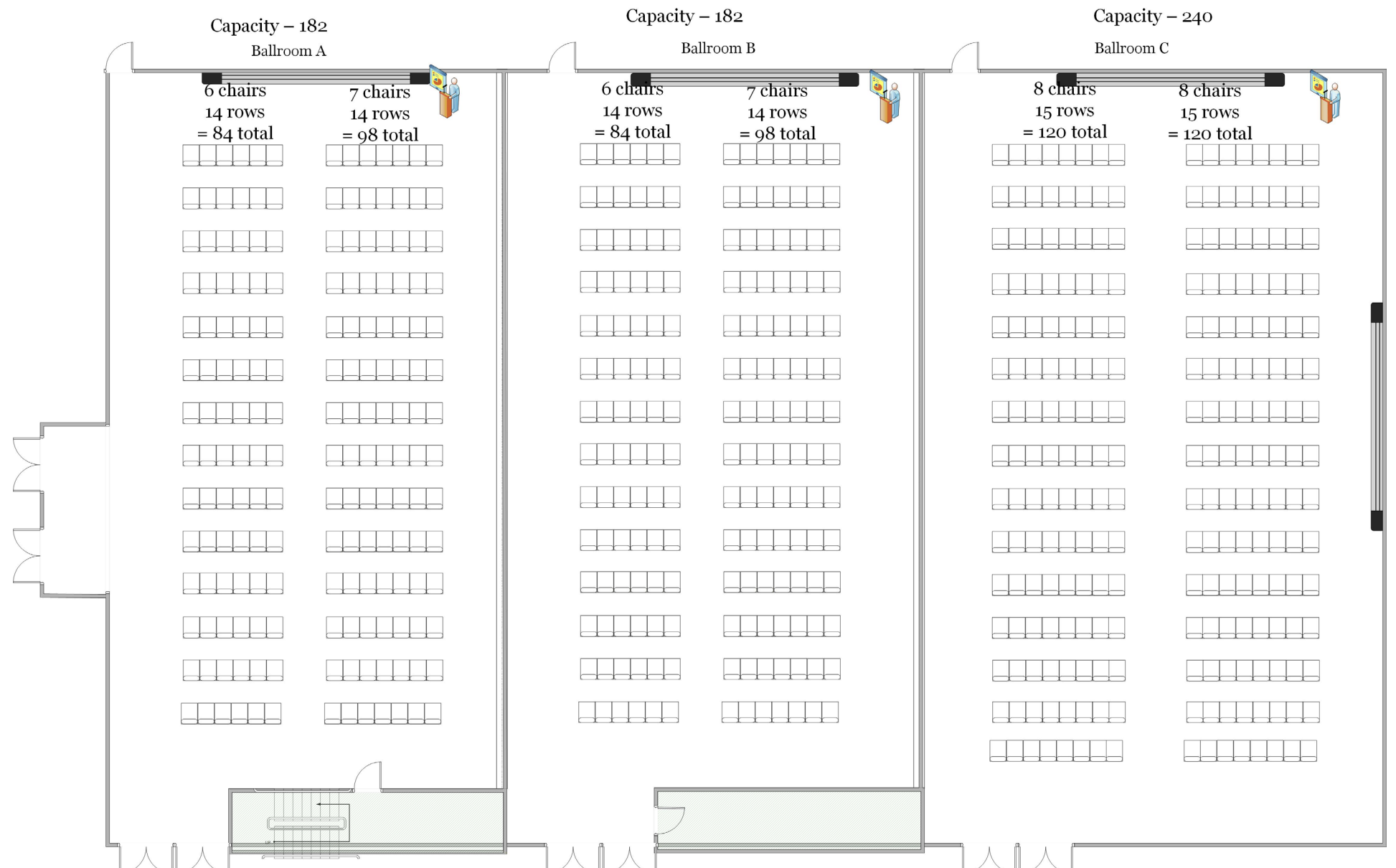
LECTURE

6 ft from walls to chairs
4ft aisle in between chair columns

Ballroom A
Capacity – 182

Ballroom B
Capacity – 182

Ballroom C
Capacity - 240



LECTURE

6 ft from walls to chairs
4ft aisle in between chair columns

Capacity 224



Diagram shows BALLROOM C as a separate room

Ballroom C
Facing north
Capacity - 224

BANQUET ROUNDS

Diagram shows
BALLROOM A
as one room

Ballroom A

Ballroom B

Ballroom C

Ballroom A
Capacity - 80

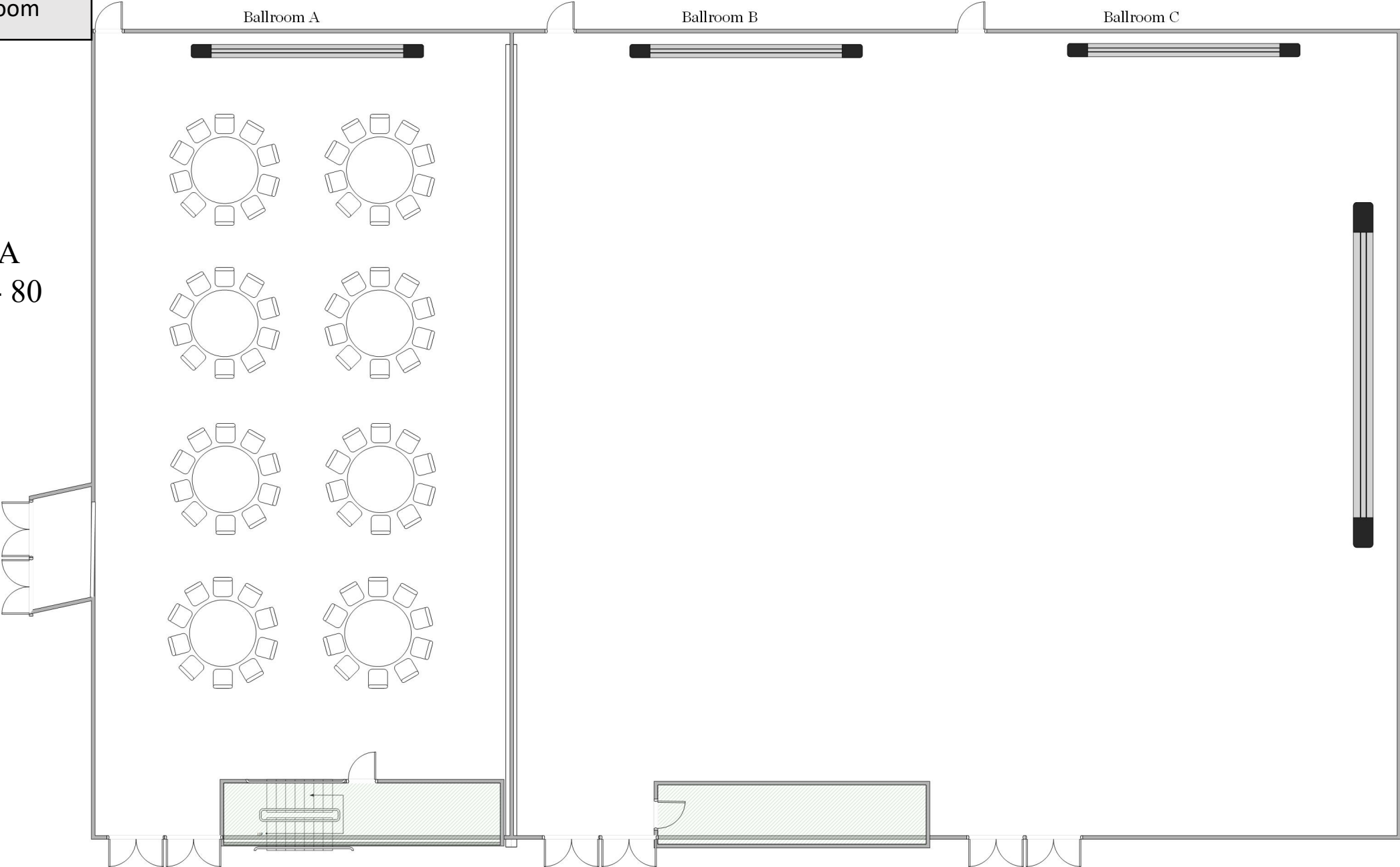


Diagram shows
BALLROOM B
as one room

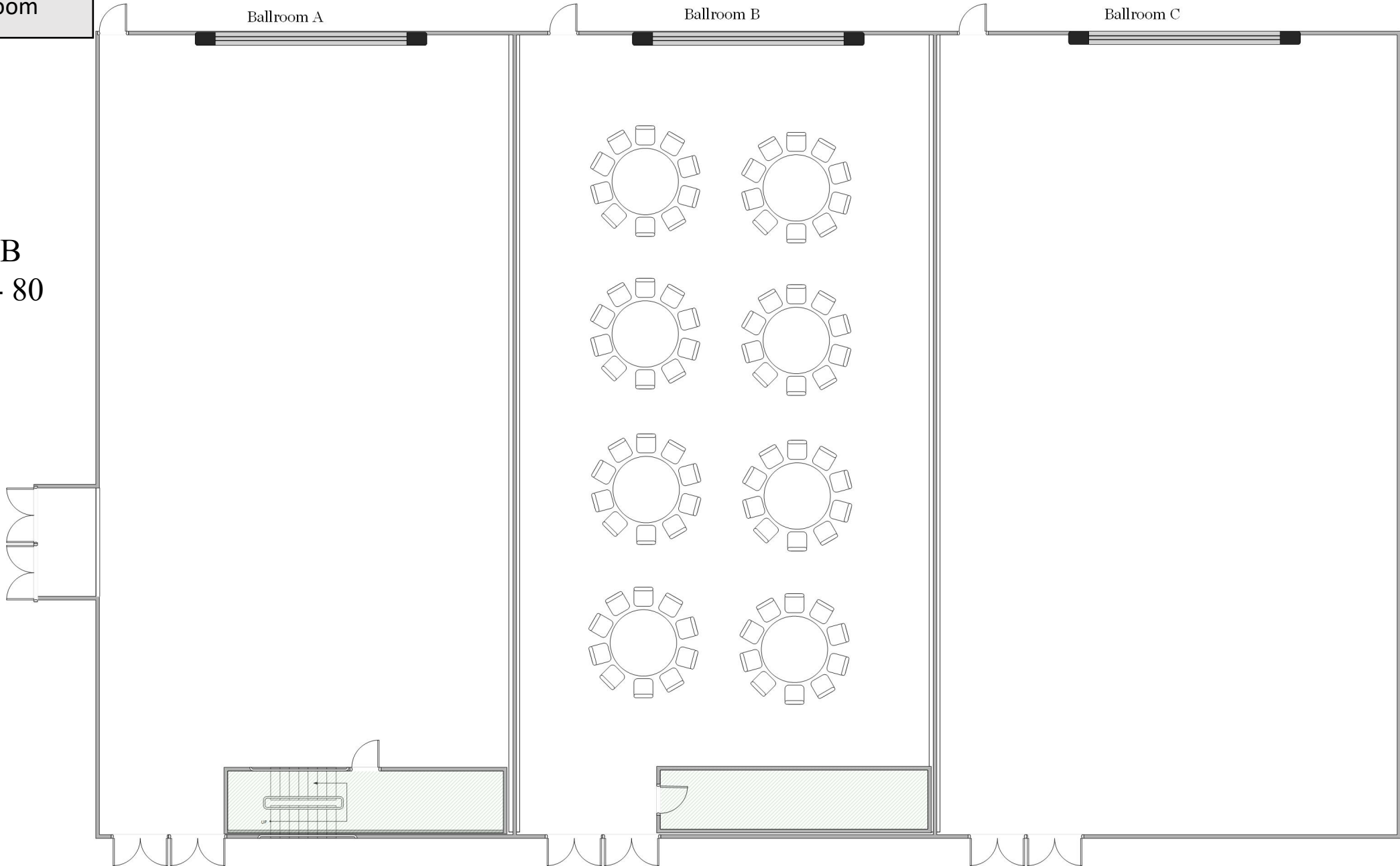
BANQUET ROUNDS

Ballroom A

Ballroom B

Ballroom C

Ballroom B
Capacity - 80



BANQUET ROUNDS

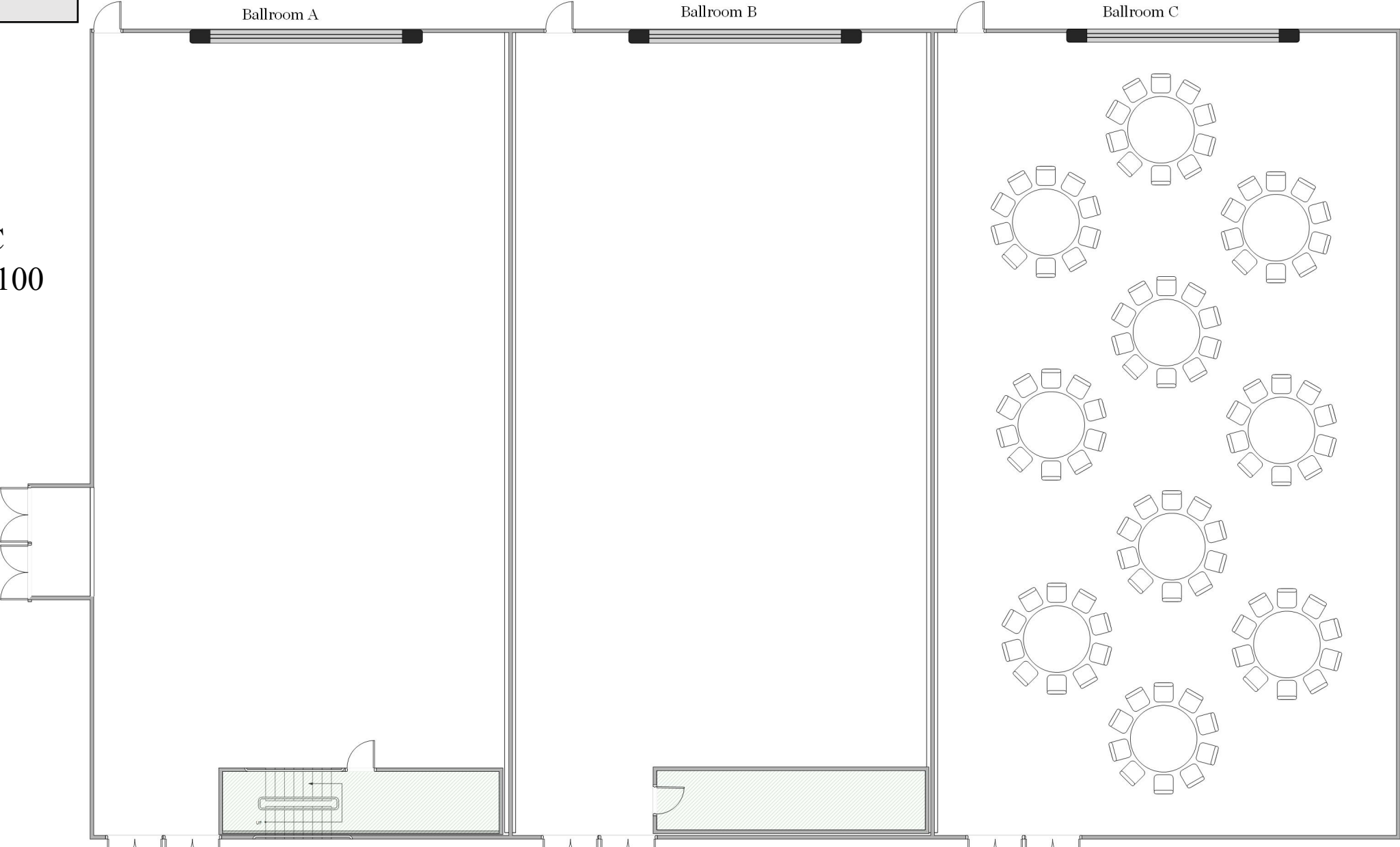
Ballroom A

Ballroom B

Ballroom C

Ballroom C
Capacity - 100

Diagram shows
BALLROOM C
as one room



CLASSROOM

Ballroom A

Ballroom B

Ballroom C

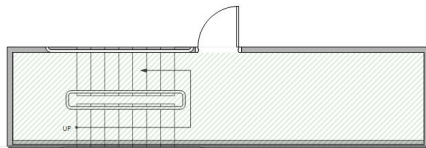
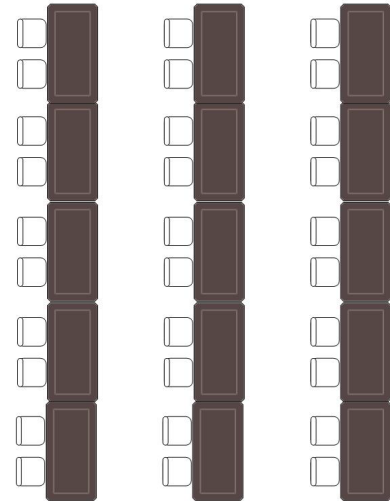
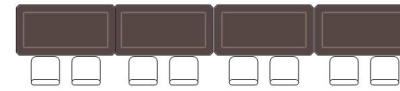
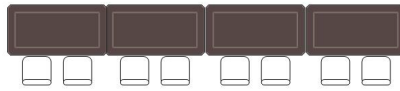
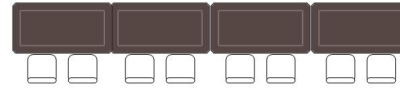
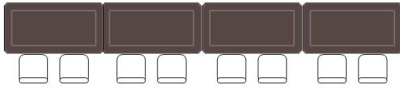
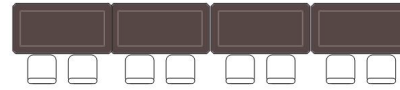
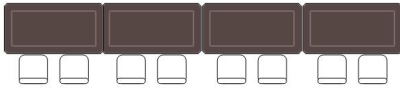
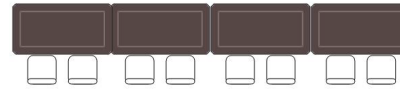
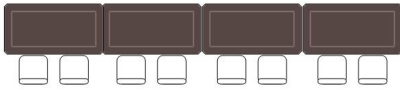
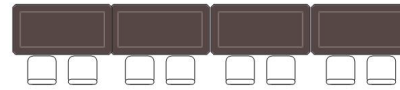
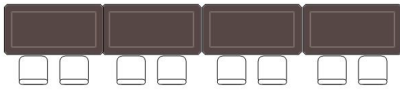
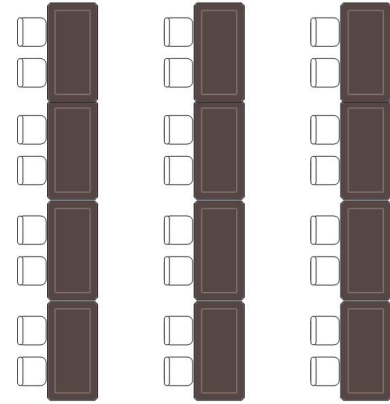
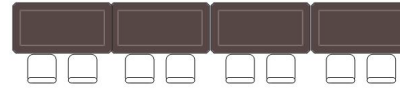
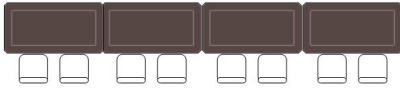


Diagram shows BALLROOM A, BALLROOM B, and BALLROOM C as separate rooms

Ballroom A
Capacity – 48

Ballroom B
Capacity – 48

Ballroom C
Facing North
Capacity – 48

Ballroom C
Facing wall
Capacity - 54

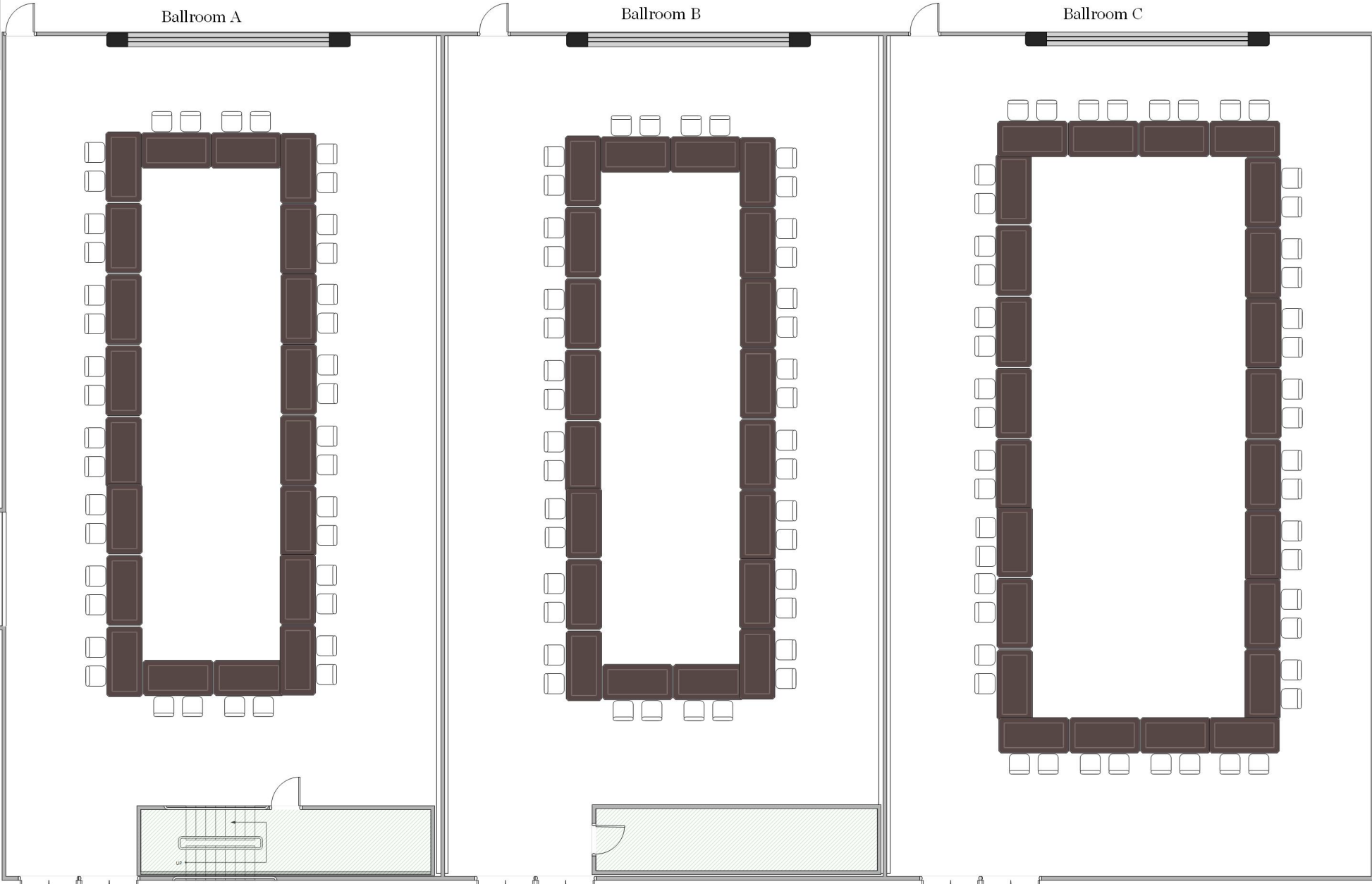
CONFERENCE SQUARE

Diagram shows
BALLROOM A,
BALLROOM B, and
BALLROOM C as
separate rooms

Ballroom A
Capacity – 40

Ballroom B
Capacity – 40

Ballroom C
Facing North
Capacity – 48



EXHIBIT

Diagram shows
BALLROOM A,
BALLROOM B, and
BALLROOM C as
separate rooms

Ballroom A & Ballroom B
Capacity – 36 – 18 tables
OR
Capacity – 32 – 16 tables

Ballroom C
Capacity – 54 – 27 tables
OR
Capacity – 34 – 17 tables

